



## Business News

### Letter from the President

As we welcome July, we also celebrate an extraordinary milestone in our nation's history—the 250th anniversary of the United States. This Independence Day is an opportunity to reflect on the vision, determination, and entrepreneurial spirit that have shaped our country for two and a half centuries. Here at the Chamber, we see our local businesses continue that legacy every day. Whether you've owned your business for decades or recently opened your doors, your commitment to serving customers, creating jobs, and investing in our community strengthens the place we are proud to call home.



It's hard to believe that the Taste of Roselle will be here before we know it. From July 31-August 2nd we will be hard at work running the Bingo and Beer Tents. Please consider signing up for a shift, and bring a friend! There is no better opportunity to network and increase your business visibility. Please take a few minutes to review our volunteer and sponsorship forms below and contact Gail at the Chamber Office to get signed up.

Before we get to the Taste, we'll be meeting up for a member luncheon at Sammy's on July 14th at 11:30am. The following week we'll be hosted by the American Legion for a Business After Hours on July 22nd at 5:30pm. Tickets for our upcoming Beef Raffle will continue to be available as well. See

### Board of Directors

#### President

Amy Mueller DDS  
*Mueller & Associates Family Dentistry*

#### Vice President

John T. Dabrowski  
*Bloomington Township Republican Party*

#### Secretary

Natalie Lawrence  
*Itasca Bank & Trust Co.*

#### Treasurer

Cindy Franceschini  
*Salerno's Rosedale Chapels*

#### Directors

Lynne McGinn  
*ABM Commercial Flooring, Inc.*

Anthony DeGrado  
*Anthony DeGrado Ins. Agency Inc.*

John Mazzone  
*Bloomington Bank & Trust*

Cheri Molfese  
*Crown Coverings, Inc.*

Fernando Fabela  
*Montenegro, Inc.*

Jenny Yockey  
*Yockey's Friendly Ford*

#### Director Emeritus

Jim Hodgdon  
*The HBC Insurance Group*

#### Executive Director

Gail Croson

below for further details on all of these events.

On behalf of the Chamber's Board of Directors, thank you for your continued membership, participation, and dedication. We wish you, your employees, and your families a safe, enjoyable, and memorable Fourth of July.

Amy Mueller DDS  
Mueller & Associates Family Dentistry  
(630) 529-1999

Member  
Directory



# MEMBER BUFFET LUNCH

**Tuesday, July 14**  
**11:30 am**

*Sammy's*  
MEXICAN GRILL BAR

**1354 Lake Street**  
**Roselle**  
(on the patio)



**Reserve by Friday, July 10!**

YOU'RE INVITED . YOU'RE INVITED . YOU'RE INVITED

# Business After Hours

WEDNESDAY, JULY 22  
5:30 PM TO 7:30 PM



NW DUPAGE POST 1084  
344 E. MAPLE AVENUE,  
ROSELLE



COMPLIMENTARY BEVERAGES  
& APPETIZERS WILL BE SERVED

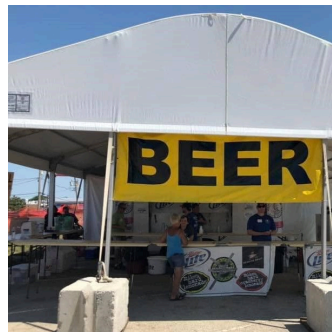
Reserve by Monday, July 20!

## Taste of Roselle

Friday, July 31 through Sunday, August 2

We're once again hosting Bingo & Beer Tents at this year's Taste of Roselle!

## Volunteers Needed!



We have a number of experienced members who are taking on the responsibility running our tents; however, they can't do it alone! Everyone must

do their part to help with 25+ hours throughout the weekend.

It's a great way to get to know your fellow-Chamber members, make new friends, and, most importantly, have fun. So, sign up with a friend or co-worker for a shift or more!

### BINGO SCHEDULE MUST BE 18 YEARS OF AGE

<b>Friday, July 31</b>	5:30 PM - 8:30 PM	8:15 PM - 11:30 PM	
<b>Saturday, August 1</b>	2:30 PM - 5:30 PM	5:15 PM - 8:30 PM	8:15 PM - 11:30 PM
<b>Sunday, August 2</b>	2:30 PM - 5:30 PM	5:15 PM - 8:30 PM	

### BEER SCHEDULE MUST BE 21 YEARS OF AGE and BASSET CERTIFIED

<b>Friday, July 31</b>	5:30 PM - 9:00 PM	
<b>Saturday, August 1</b>	12:00 PM - 4:00 PM	7:30 PM - 11:30 PM
<b>Sunday, August 2</b>	2:45 PM - 6:00 PM	

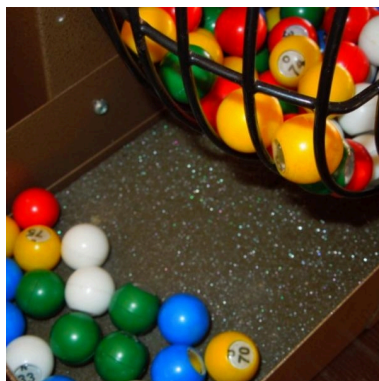
- Check One:**
- I am BASSET certified. Attached is a copy of my certification.
  - I will take online ILLINOIS ALCOHOL BASSET TRAINING @ [www.learn2serve.com](http://www.learn2serve.com) and forward my certificate to the Chamber office.

[Download Volunteer Form](#)

[Illinois Alcohol Basset Training](#)

For more information, contact Gail at the Chamber office.  
[executivedirector@rosellechamber.com](mailto:executivedirector@rosellechamber.com)  
(630) 894-3010

## Bingo Sponsorships Available!!



The success of our Bingo Tent is directly related to the tremendous response from Chamber members and our friends who have supported this event through sponsorships.

This sponsorship opportunity provides a means for your business to take advantage of the Chamber's participation in the Taste of Roselle. The people

who play the games are potential customers for your business – either as individual consumers or representatives of their companies.

Your sponsorship will be posted on all bingo tables and will be announced as random sponsors are drawn for games. All sponsors will also be recognized in Chamber eNews.

Your sponsorship, a minimum of \$150.00, must be received at the Chamber office no later than Friday, July 24, 2026 to ensure recognition.

**Secure your sponsorship here!**

---

## **Children's Bingo at the Taste!**

Saturday, August 1 & Sunday, August 2  
1:30 pm to 2:45 pm

The Chamber will be hosting Children's Bingo at the Taste of Roselle. Bingo is FREE to all children who bring a can good for the Bloomingdale Township Food Pantry. An adult must accompany children but only the children will win prizes.





**WIN  
\$3,500 IN MEAT  
&  
THE FREEZER TO  
PUT IT IN**

**BEEF**  
*Up our website*  
**MEAT  
RAFFLE**

**\$25 per ticket  
\$100 for 5 tickets  
\*Only 400 tickets to be sold**



**Winner will be notified on  
August 18th**



- 16 CT**  
100Z  
PRIME SKIRT STEAKS
- 20 CT**  
FRENCH BONE IN PORK CHOPS
- 60 CT**  
PRIME RIBEYE CHUCK BURGERS
- 40 LBS**  
TENDERLOIN TIPS
- 10 CT**  
200Z PORTERHOUSE STEAKS
- 26CT**  
COHO SALMON 6OZ-8OZ
- 5 LBS**  
13-15PER LB  
COOKED COCKTAIL SHRIMP
- 5 CT**  
ELI'S CHEESE CAKES
- 16 CT**  
6OZ  
PRIME FILET MIGNON
- 16 CT**  
100Z  
BONELESS RIBEYE

**Purchase tickets here!**

**Welcome New Members!**

DripTherapy  
796 W. Bartlett Road  
Bartlett, IL 60103  
(847) 241-4531  
[www.getdripsy.com](http://www.getdripsy.com)



DripTherapy is a wellness clinic in Bartlett, IL offering IV therapy, vitamin injections, peptides, hormone optimization, weight management, labs and

## Showcase Your Business!

As a staple, our calendar provides for a Business Before Hours or a Business After Hours event on the fourth Wednesday of the month which are hosted by member businesses.



*Would you like to host an event?*

Our partnership begins with the Chamber posting your event in our online calendar followed by an invitation to the membership. Reservations will be collected by our office and reported to you as we get closer to the event date. At the event, a Chamber provided Ambassador will greet and provide name badges for all attendees.

As our host, there are many elements to consider in preparing for a successful event which include:

- offering a variety of complimentary warm and cold appetizers,
- complimentary beverages to include wine, beer, pop and water (mixed drinks optional),
- contributing item(s) for raffle drawing, and
- providing a Greeter Table near the entrance for a Chamber Ambassador to register guests and collect their business cards for the raffle.

This is a terrific opportunity to bring potential customers into your business while at the same time offering fellow-Chamber members a networking venue

If you'd like to host a Before or After Hours event, please contact:

Gail Croson  
[executivedirector@rosellechamber.com](mailto:executivedirector@rosellechamber.com)  
(630) 894-3010

## Thank you to our newsletter sponsors!

GEORGE A. SALERNO

Rosario D.  
**SALERNO'S SONS**  
Funeral Homes

Rosedale Chapels  
450 W. Lake Street  
Roselle, IL 60172-3545  
[salernofuneralhomes.com](http://salernofuneralhomes.com)

Tel (630) 889-1700  
Fax (630) 582-5238  
[salernorosedale@gmail.com](mailto:salernorosedale@gmail.com)



**Jenny Yockey**  
[jyockey@friendlyford.com](mailto:jyockey@friendlyford.com)

333 East Irving Park Rd. • Roselle, IL 60172  
[www.friendlyford.com](http://www.friendlyford.com)

Main: (630) 924-8686 ext. 8323  
Fax: (630) 924-5024



## Commercial Flooring, Inc.

163 Covington Drive, Bloomingdale, IL 60108

### Albert A. Lucenti II

President

[630] 924-7766  
[630] 417-8360 Cell

FAX [630] 924-7794  
albert@abmcf.com



LICENSED • BONDED • INSURED

# 630-924-0665

service@masplumbing.com www.masplumbing.com



IN BUSINESS SINCE 1999

## PAN AMERICAN BANK & TRUST

**ANTHONY PALLADINO**  
AVP, Business Banking & Treasury Management

1110 Jorie Blvd. • Suite 103 • Oak Brook, IL 60523  
Phone: 630-791-8442 • Mobile: 708-428-0892  
apalladino@panamerbank.com • www.panamerbank.com

## electri-flex



**JASON KINANDER**  
CEO

**ELECTRI-FLEX COMPANY**  
P.O. BOX 72260  
222 WEST CENTRAL AVENUE  
ROSELLE, ILLINOIS 60172-1994  
www.electriflex.com

PHONE: 630-529-2920  
MOBILE: 630-632-9449  
FAX: 630-529-0482  
jwk@electriflex.com



Natalie Lawrence

Assistant VP, Operations Officer  
(Branch / Digital Banking)

One East Irving Park Road  
Roselle, Illinois 60172  
Phone: 630-773-0350 Ext 601  
Fax: 630-295-8669  
natalielawrence@itascabank.com  
www.itascabank.com



- COMPLETE AUTO & DIESEL REPAIR
- COMPUTERIZED 4-WHEEL ALIGNMENT
- FAILED EMISSIONS REPAIR
- MODULE PROGRAMMING AVAILABLE
- BRAKE REPAIR SPECIALISTS

**DAVE KADOLPH**

25W241 LAKE STREET  
ROSELLE (KEENEYVILLE), IL 60172  
WWW.STANSSERVICE.COM

PHONE: (630) 894-1770  
FAX: (630) 894-5699  
EMAIL: SERVICE@STANSSERVICE.COM

"HERE TO SERVE YOU!"

## WOOD DALE

ELECTRICAL CONSTRUCTION, INC.

Electrical Construction, Inc. | Electrical Design Build

**TOM KOWALSKI**

p 630.295.9100 | c 630.464.8883 | f 630.295.9160  
65 North Garden Avenue | Roselle, Illinois 60172  
tom.k@wooddaleelectric.com



**Michael D. Hovde, Jr.** | Attorney

107 South Third Street, Suite 3, Bloomingdale, IL 60108  
OFFICE (630) 894-8500 | FAX (630) 894-0078  
mike@chicagolegal.com



**80% OFF**  
**USED & NEW**  
**OFFICE FURNITURE**

501 S Gary Ave. Roselle, IL  
888-264-2253



**AffordableOffice.com**



## FIRST EAGLE BANK

**Jada Miller**  
Relationship Banker  
jmiller@febank.com

1040 East Lake Street | Hanover Park, IL 60133  
T 630.893.3800 | F 630.893.9334 | D 630.893.2063  
www.febank.com



**Done Just Right Inc.**  
"your full line of cleaning services"

Specializing in  
Quality Service since 1991

**Mike Corliss**

153 W. Irving Park Rd.  
Roselle, IL 60172  
www.djrcleaning.com

Phone: 630.893.0757  
Mobile: 630.514.7709  
Fax: 630.893.8216  
mcorliss@djrcleaning.com



1360 Lake St. · Roselle  
847-278-1666 · Fax: 847-278-1690 · www.rookiespub.com

**John Mazzone**  
Vice President/Branch Manager

jmazzone@bloomingdalebank.com  
T | 630-295-5487  
SUPPORT | 630-295-9111  
F | 630-295-9222



165 W Lake St.  
Bloomingdale, Illinois 60108

## Your 2025 Township Team

### VOTE APRIL 1ST

*Michael D. Hovde, Jr.* - Supervisor  
*Branka Poplonski* - Clerk  
*John T. Dabrowski* - Assessor

@your2025townshipteam  
www.Your2025TownshipTeam.com  
your2025townshipteam@gmail.com

## IZZI & ASSOCIATES, LTD.

CERTIFIED PUBLIC ACCOUNTANTS

**EDWARD D IZZI, CPA**  
PRINCIPLE

390 EAST DEVON AVENUE (630) 671-9660 OFFICE  
SUITE 101 (630) 671-9766 FAX  
ROSELLE, ILLINOIS 60172 (630) 918-2525 DIRECTOR

EDWARD@IZZIANDASSOCIATES.COM

## GJM MARTUCCI LAW

**Gregory J. Martucci**  
Attorney at Law

40 S. Prospect St., Suite 102 P 630.980.8333  
Roselle, IL 60172 F 630.980.8404  
www.martuccilaw.com greg@martuccilaw.com

## ACS Mortgage Corporation

Solving tomorrow's mortgage needs TODAY

Serving all of IL and FL, so no matter  
where you are financing your home,  
we are there for you.

**Charlotte A. Roehrig**  
President

Croehrig4mtg@aol.com  
www.acsmortgage.com  
630.202.5310 Cell  
630.239.7523 Fax  
NMLS #593766  
NMLS #194334



## Meeting & Banquet Hall

*Plan your next meeting or function with us!*  
Affordable Hall Facilities to accommodate up to 120.

Wi-Fi ACCESS  
Electronically Equipped for Your Presentation.

Northwest DuPage  
American Legion Post 1084  
344 East Maple Avenue  
Roselle IL

(630) 894-8524 www.post1084.com



## THIS SPACE AVAILABLE!

For more information,  
contact Gail Croson

(630) 894-3010 | [executivedirector@rosellechamber.com](mailto:executivedirector@rosellechamber.com)

Roselle Chamber of Commerce | (630) 894-3010 | [www.rosellechamber.com](http://www.rosellechamber.com)

Roselle Chamber of Commerce & Industry | 17 Howard Avenue | Roselle, IL 60172 US

[Unsubscribe](#) | [Update Profile](#) | [Constant Contact Data Notice](#)



Try email marketing for free today!